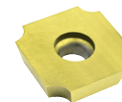




Material To Be Machined
Carbon Steel, Alloy Steel
Stainless Steel & Cast Iron
All Non Ferrous Metal



- All surfaces precision ground
 - From 4mm to 1.5mm convex radius
 - Honed cutting edge
 - 15° relief angle
 - ISO screw hole
 - (2, 4) two and four cutting edges
- For special operations
 - Convex radius milling
 - Light roughing to finishing operations
 - Medium cutting speeds
 - Good surface finish

Insert Style	ANSI Description	Insert Grade	Material Application	Insert Specifications			
			High Temper Alloy, 300 Series Stainless Steel, Cast Iron, Copper & Brass, Carbon and Alloy Steel	I.C.	Thick	Ground Concave Radius	Hole Diameter
			DASK25B				

SDGX -09C_E

UPC 733101-

	SDGX-09C01-E-	DASK25B	95299	.375	.1563	.0156	.173
	SDGX-09C02-E-	DASK25B	95303	.375	.1563	.0312	.173
	SDGX-09C03-E-	DASK25B	95307	.375	.1563	.0469	.173
	SDGX-09C04-E-	DASK25B	95311	.375	.1563	.0625	.173

SDGX -19C_E

UPC 733101-

	SDGX-19C05-E-	DASK25B	95250	.750	.1875	0.0781	.220
	SDGX-19C06-E-	DASK25B	95254	.750	.1875	0.0937	.220
	SDGX-19C07-E-	DASK25B	95258	.750	.1875	0.1094	.220
	SDGX-19C08-E-	DASK25B	95262	.750	.1875	0.125	.220
	SDGX-19C09-E-	DASK25B	95266	.750	.1875	0.1406	.220
	SDGX-19C10-E-	DASK25B	95270	.750	.1875	0.1562	.220
	SDGX-19C11-E-	DASK25B	95274	.750	.1875	0.1719	.220
	SDGX-19C12-E-	DASK25B	95278	.750	.1875	0.1875	.220
	SDGX-19C13-E-	DASK25B	95282	.750	.1875	0.2031	.220
	SDGX-19C14-E-	DASK25B	95286	.750	.1875	0.2187	.220
	SDGX-19C15-E-	DASK25B	95290	.750	.1875	0.2344	.220
	SDGX-19C16-E-	DASK25B	95294	.750	.1875	0.25	.220